

AIROH

AWC 2

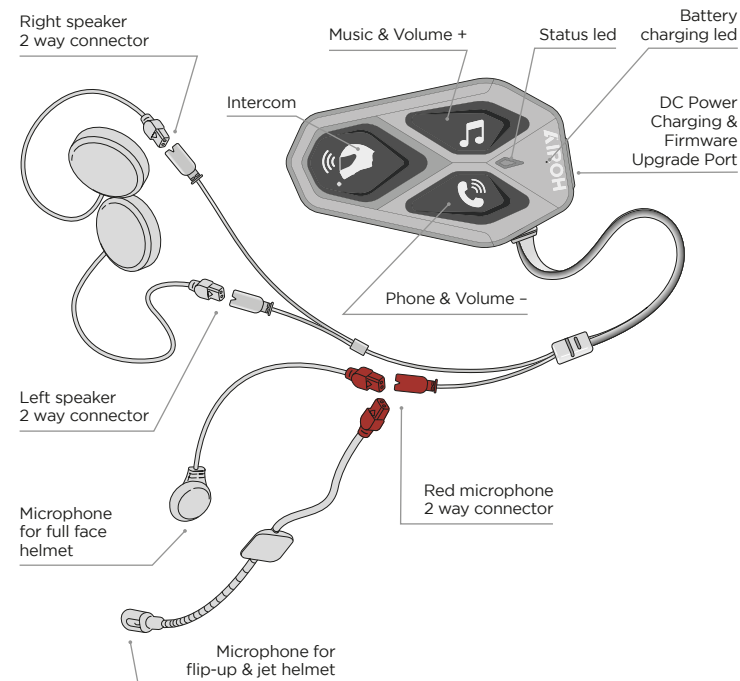
FOLLOW THE SOUND

Quick guide



POWERED BY
INTERPHONE
stay in touch

Product details



DOWNLOAD THE COMPLETE
USER GUIDE AND CHECK FOR
SOFTWARE UPDATES ON THE
WEBSITE.

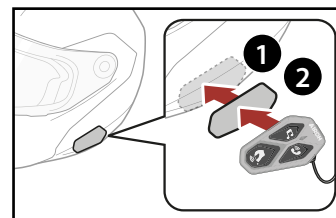
www.airoh.com

Locatelli S.p.A.

Via Resistenza 5/A - Almenno S.Bartolomeo
24030 (BG) Italia T. +39 035 553 101

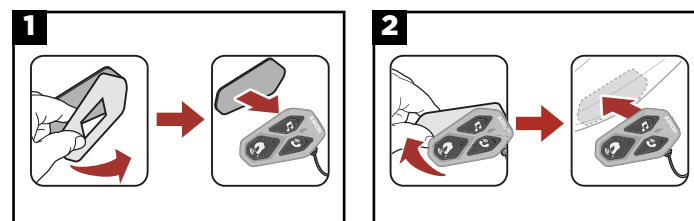
Installation

Use application with Velcro of main unit



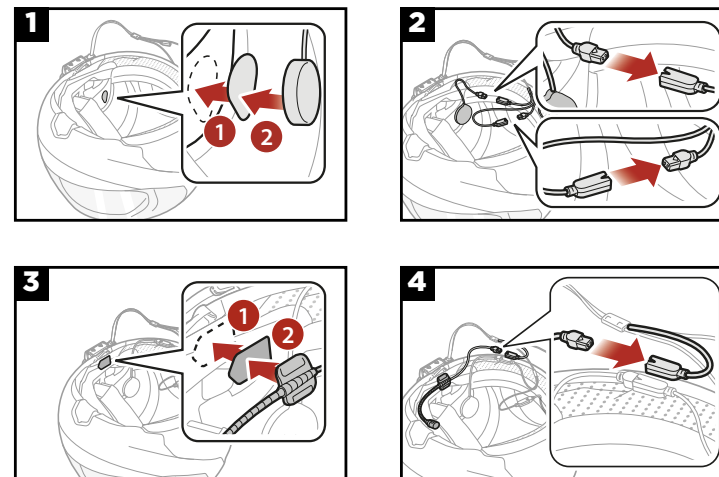
For the position of the
main unit, refer to the
specific booklet supplied
with the AIROH helmet

Use/application of the double sided adhesive tape for the
main unit



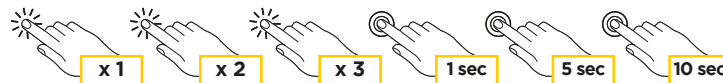
To correctly place main unit, microphone and speakers, it
is necessary to follow the SPECIFIC instructions supplied
with the AIROH helmet. Each helmet requires a precise
placement that must be respected to ensure proper
installation and operation.

Installation of speakers and microphone



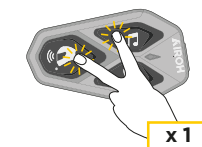
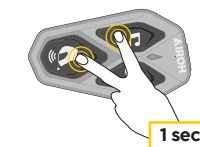
Legend and basic functions

Press **once** Press **twice** Press **thrice** Press **for 1 sec** Press **for 5 sec** Press **for 10 sec**



Switch on

Switch off

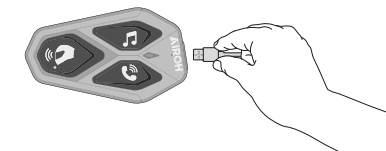


Turn up the volume

Turn down the volume



Charging

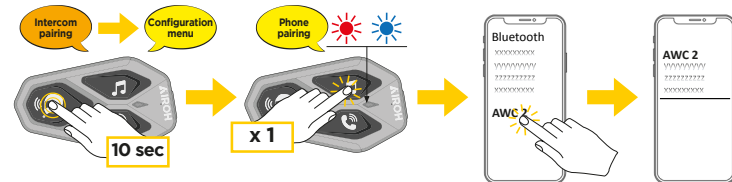


AIROH

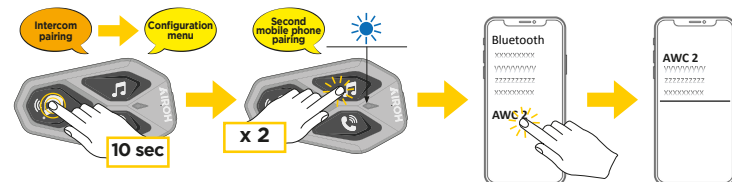
AWC 2
FOLLOW THE SOUND

Bluetooth® devices pairing

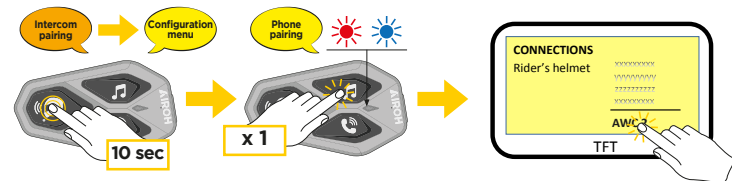
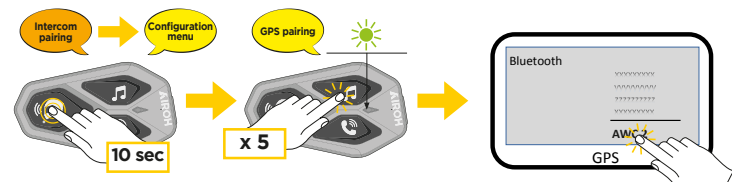
Pairing the main phone (to be made with control unit on)



Pairing the second phone (to be made with control unit on)



Pairing with GPS-TFT (to be made with control unit on)

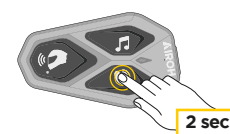


Phone

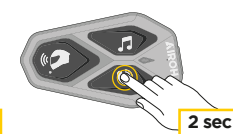
Answer incoming calls



End the call



Reject the call



Voice assistant



Speed dial



Music

Music play



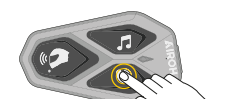
Music pause



Next track



Previous track

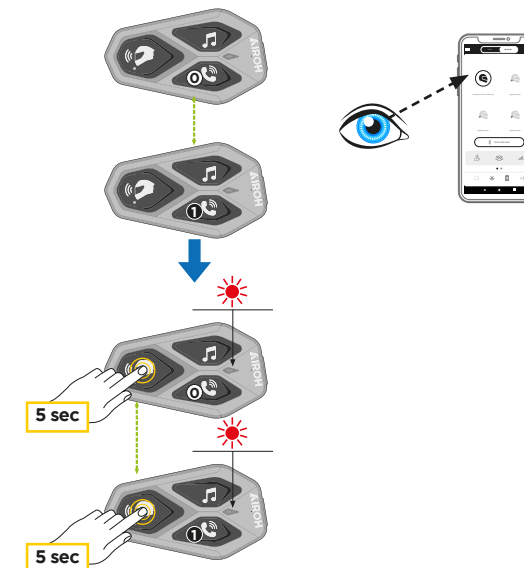


Start/stop music sharing



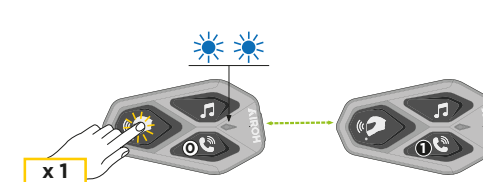
Bluetooth® Intercom - pairing

Intercom pairing 2 devices



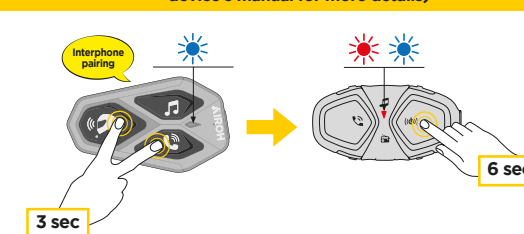
Bluetooth® Intercom - conference

Intercom conference

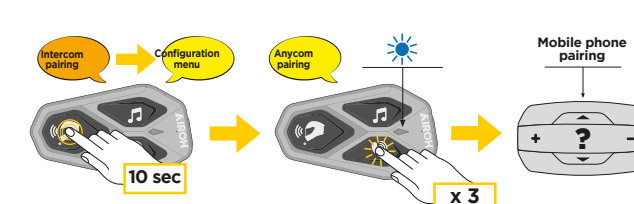


Bluetooth® Intercom - other pairings

To be made with AWC2 unit on and with other device's control unit off (Refer to the other device's manual for more details)



Pairing with other brands anycom



Setup



APP: Interphone UNITE