

# AIROH

## AWC 4

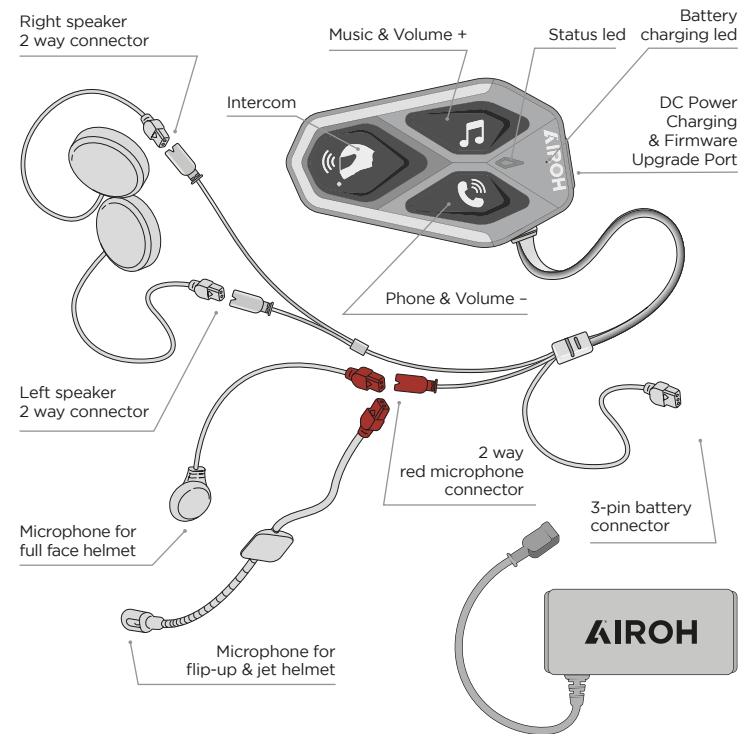
BREAK THE SILENCE

### Quick guide



POWERED BY  
**INTERPHONE**  
stay in touch

### Product details



DOWNLOAD THE COMPLETE  
USER GUIDE AND CHECK FOR  
SOFTWARE UPDATES ON THE  
WEBSITE

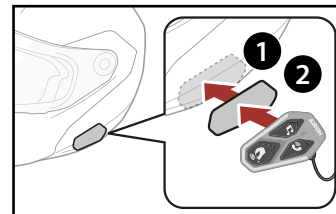
www.airoh.com

**Locatelli S.p.A.**

Via Resistenza 5/A - Almenno S.Bartolomeo  
24030 (BG) Italia T. +39 035 553 101

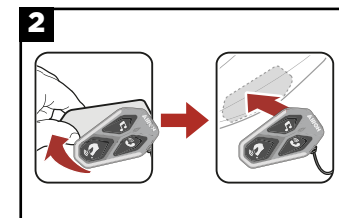
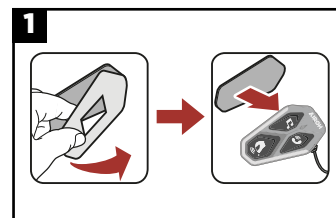
### Installation

Use/application with velcro of the main unit



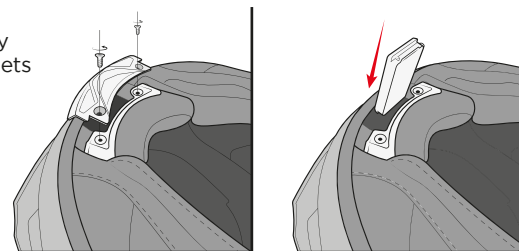
For the position of the  
main unit, refer to the  
specific booklet supplied  
with the AIROH helmet

Use/application of the double sided adhesive tape for the  
main unit



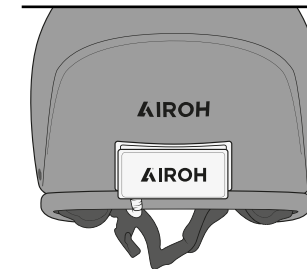
### BATTERY INSERTION:

Example of battery  
placement in helmets  
with internal compartment

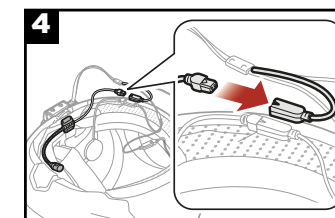
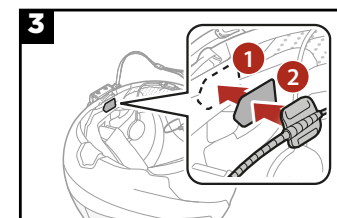
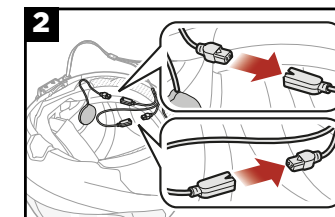
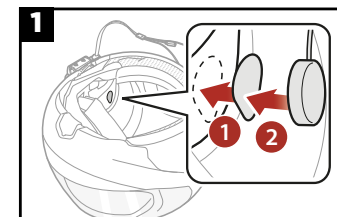


Example of battery placement  
in helmets without internal  
compartment

To correctly place battery, main  
unit, microphone and speakers, it  
is necessary to follow the SPECIFIC  
instructions supplied with the  
AIROH helmet. Each helmet requires  
a precise placement that must  
be respected to ensure proper  
installation and operation.

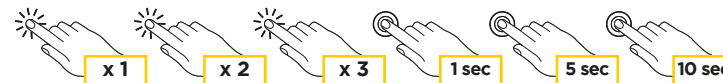


Installation of speakers and microphone



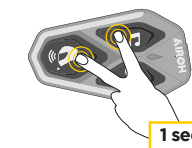
### Legend and basic functions

Press **once** Press **twice** Press **thrice** Press for **1 sec** Press for **5 sec** Press for **10 sec**



Switch on

Switch off

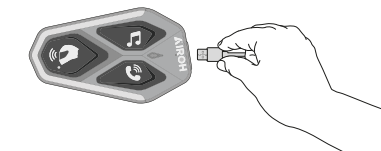


Turn up the volume

Turn down the volume

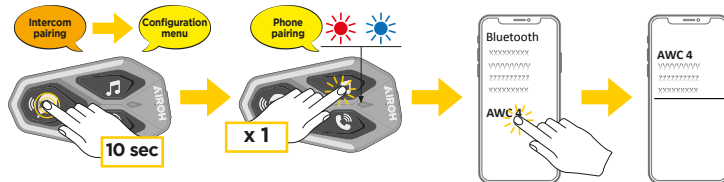


Charging

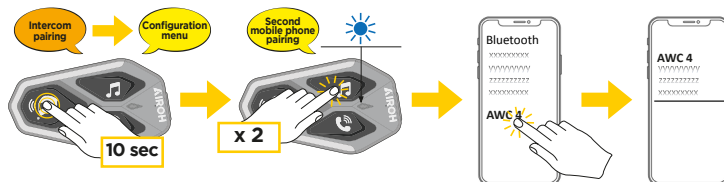


## Bluetooth® devices pairing

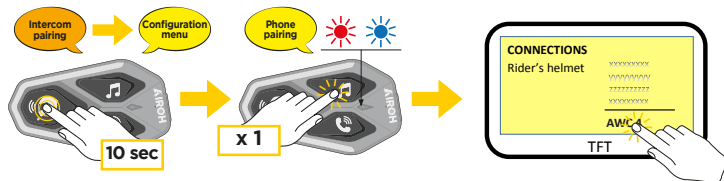
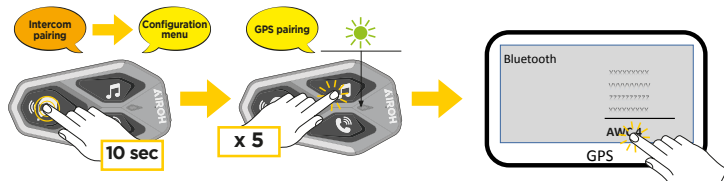
### Pairing the main phone (to be made with the control unit on)



### Pairing the second phone (to be made with the control unit on)



### Pairing with GPS-TFT (to be made with the control unit on)



## Phone

### Answer incoming call



### End the call



### Reject the call



### Voice assistant



### Speed dial



## Music

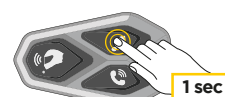
### Music play



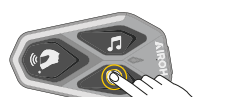
### Music pause



### Next track



### Previous track



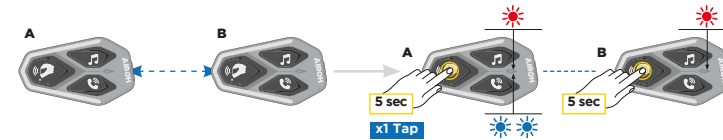
### Start/stop music sharing



## Bluetooth® Intercom - Pairing/Conference

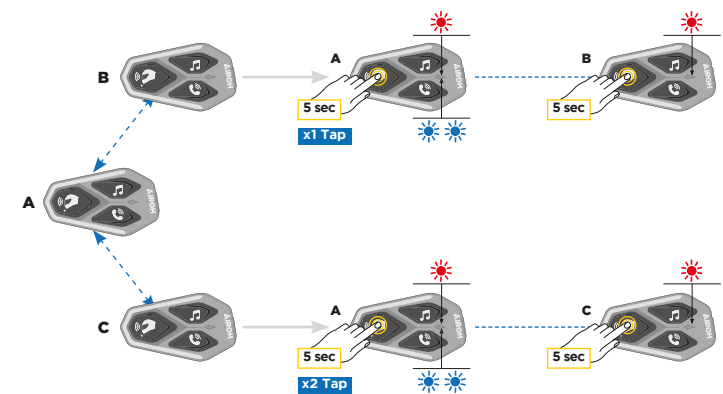
### Intercom Pairing/Conference 2 devices

Follow the steps **Pairing/Sec** to pair the intercoms.  
Follow the steps **Conference/Tap** to activate the conversation.



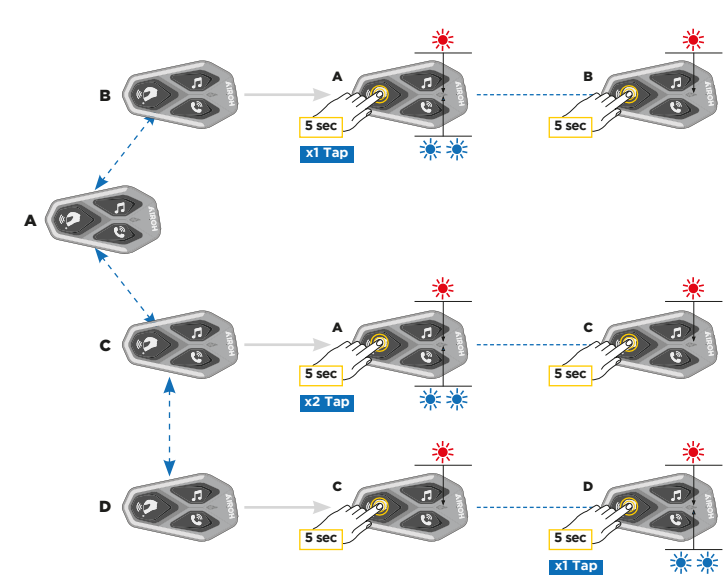
### Intercom Pairing/Conference 3 devices

Follow the steps **Pairing/Sec** to pair the intercoms.  
Follow the steps **Conference/Tap** to activate the conversation.



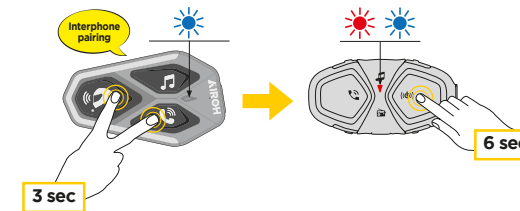
### Intercom Pairing/Conference 4 devices

Follow the steps **Pairing/Sec** to pair the intercoms.  
Follow the steps **Conference/Tap** to activate the conversation.

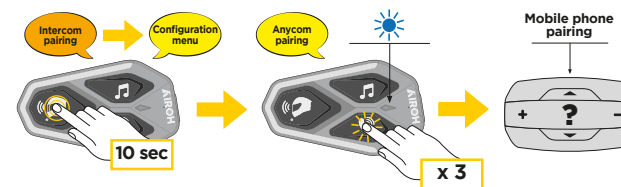


## Bluetooth® Intercom - other pairings

Matching previous series. To be made with AWC4 unit on and with other device's control unit off (Refer to the other device's manual for more details)



### Pairing with other brands anycom (except Sena)



## Setup

